

# Outsider™ MDT

## Magnetic link to Water meter, no wiring



The Outsider™ MDT combines direct meter reading with our proven AMR radio to provide an instant and error free assembly process. Our Outsider™ MDT slides directly onto the register housing of all NMT SingleMag™ and VersaMag™ water meters, secured by a single screw. With no wiring involved, we have eliminated the common errors that can occur during shipment and installation.

Like all our MDTs, the battery life exceeds five years and the AA batteries are field replaceable. The Outsider™ MDT includes the radio with reed switch and batteries, case with locking ring, and screw for securing it to the meter register.

- **Easy-to-Install:** Slides onto the register of any NMT SingleMag™ or VersaMag™ water meter and eliminates the wiring for simplified installation.
- **Plumber installations:** With the integrated meter and MDT, a plumber can install everything at each meter point without manipulating any wiring.
- **Reliable:** Combining the proven technologies of Tehama and NMT in an easy to install system helps ensure proper and long-lasting installations.

## Specifications

Meter Compatibility	NMT SingleMag™ or VersaMag™ water meter. Water meter is not included with Outsider™ MDT when purchased from Tehama.
Data Resolution	1 hour interval
Radio	Frequency: 902 – 928 MHz; FCC Certified; Standard: 10mW, Open field range over 3500 feet* Max: 80mW, Open Field range approaching 10 miles*
LED	Indicates RF network connection status
Operating Environment	-20 to 145 degree F, up to 90% RH, non-condensing.
Power	Two AA Alkaline batteries (included)
Typical Battery Life	5+ years @ 50° to 90° F, reduced at extreme temperatures
Dimensions	4.1" x 3.5" x 1.1"

\*Actual range may vary depending on installation location and topography.  
Continual product enhancements may cause specifications to change without notice.

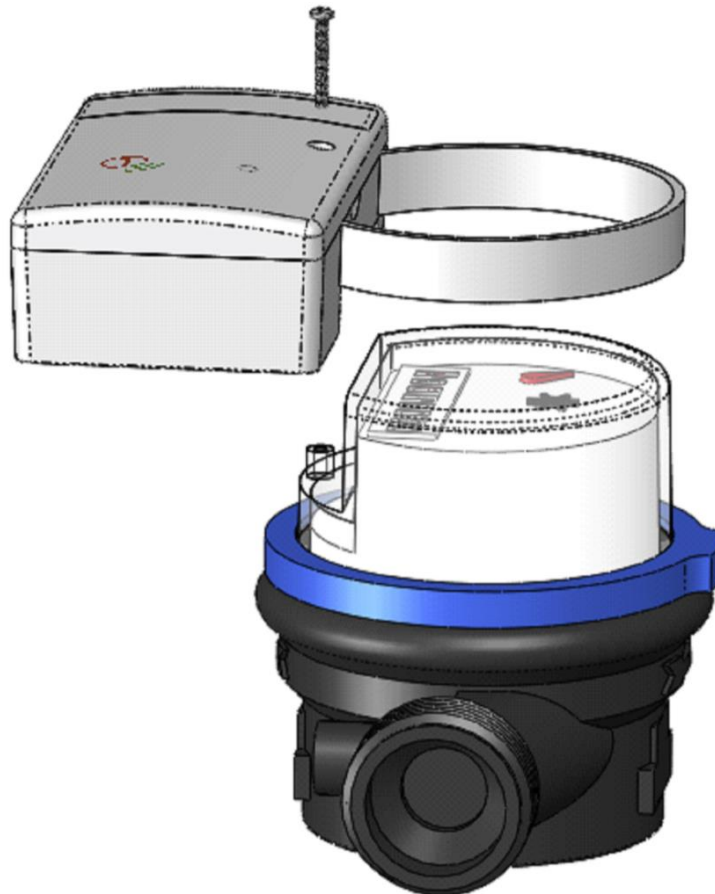
## Models

Outsider™ MDT, Standard Range	TW-162	Standard range AMR radio with integrated reed switch and special fitting enclosure. Single pulse MDT, one-hour interval data, no on-board memory.
Outsider™ MDT, Max Range	TW-172	Max Range AMR radio with integrated reed switch and special fitting enclosure. Single pulse MDT, one-hour interval data, no on-board memory.

\*Water meter not included if purchased from Tehama.

\*\* Standard and Max Range systems are NOT compatible.

Refer to [AN-119](#) in the documents section of our website for more information.




---

### Tehama Wireless

2607 7th Street, Suite G

Berkeley, CA 94710

415.495.7344

[info@TehamaWireless.com](mailto:info@TehamaWireless.com)

[www.TehamaWireless.com](http://www.TehamaWireless.com)

©2019 Tehama Wireless Design Group

Rev.1902